



TOUCH ADRIATIC

www.touchadriatic.com

AGAVE

PRINCESS V85

AGAVE ~ PRINCESS V85



Loa **25.9 m (85' 1")** Beam **6.3 m (20' 8")** Draft **1.8 m (5' 11")**
Built **2011** Refit **2018** Guests **8** Cabins **4** Crew **4** Speed **22 knots**

AGAVE ~ PRINCESS V85



KEY FEATURES

1

**Stablizisers at anchor
and underway**

2

**Exquisite selection
of water toys**

3

**4 comfortable
en-suite cabins**

4

**Smart
layout**

OVERVIEW

AGAVE feature breathtaking sporty look, dynamic handling and her performance leaves no doubt, representing the ultimate V-class yacht. She was built by Princess Yachts, delivered in 2011, refitted in 2018 and recently done cosmetic refit in 2022. AGAVE boasts fantastic deck salon providing a welcoming, open plan layout. The forward dining area seats comfortably eight guests and the feeling of space is enhanced further by sliding sunroof forward. Her deck spaces offer Al-Fresco dining table on the stern, sunbathing on the fly-bridge and on foredeck, as well as beautiful seating area on the bow. Her attractive flybridge makes the appearance of the yacht outstanding.

Princess V85 AGAVE accommodates eight guests in four air conditioned and en-suite staterooms: Master, VIP and two twin convertible cabins, all based on the lower deck level. She is equipped with a great selection of water toys allowing perfect entertainment and enjoyment moments while cruising the Adriatic coast!

AGAVE ~ PRINCESS V85



Sundeck

AGAVE ~ PRINCESS V85

6

Flybridge

AGAVE ~ PRINCESS V85



A fresco cockpit table



AGAVE ~ PRINCESS V85



Lounge area

AGAVE ~ PRINCESS V85



Dining area

AGAVE ~ PRINCESS V85



Double cabin

AGAVE ~ PRINCESS V85



12

Double cabin

AGAVE ~ PRINCESS V85

13

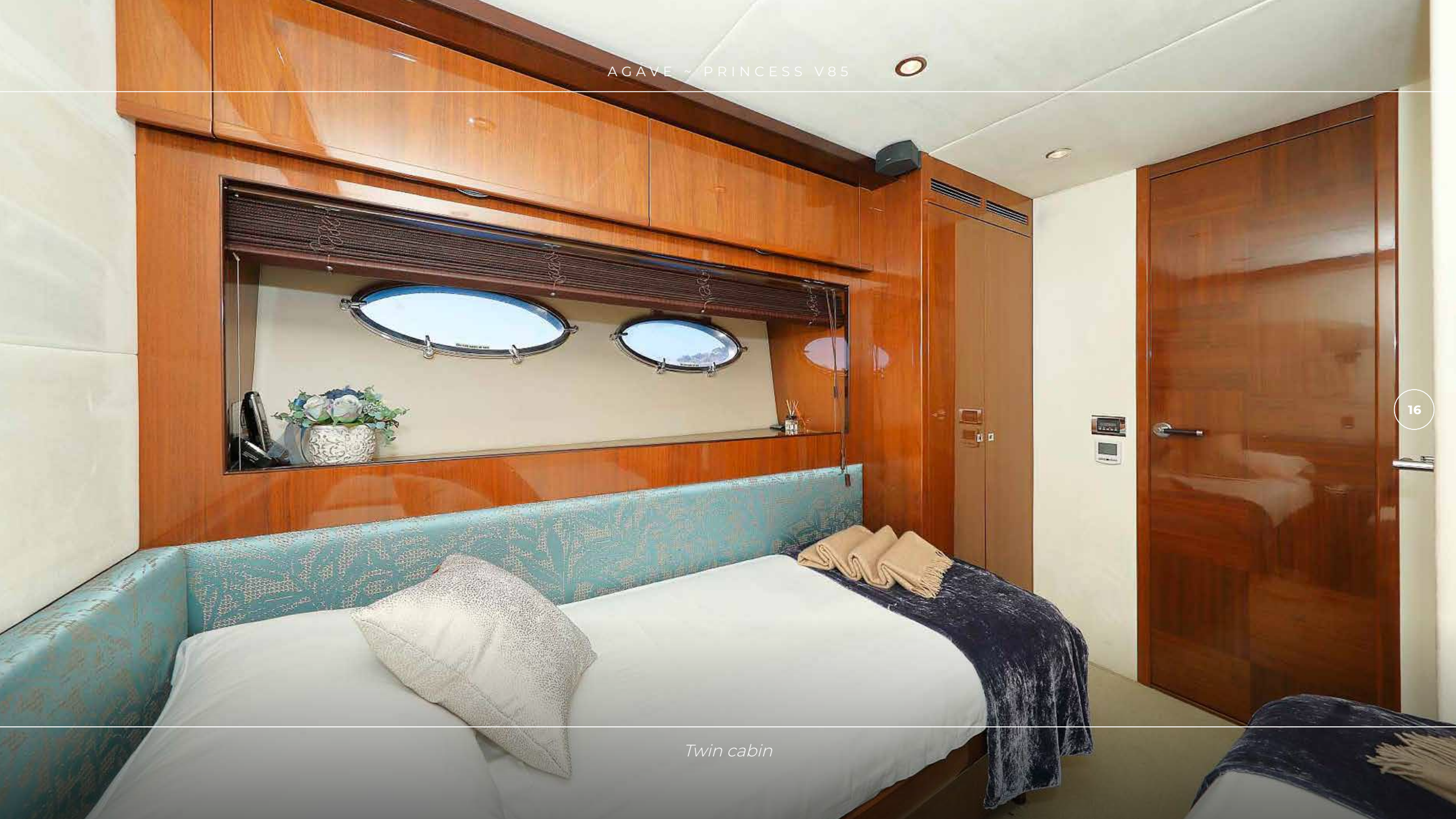
Double bathroom

AGAVE ~ PRINCESS V85



VIP cabin





Twin cabin



General arrangement

TECHNICAL SPECIFICATIONS

Length: 25.9 m (85' 1")

Beam: 6.3 m (20' 8")

Draft: 1.8 m (5' 11")

Year: 2011

Refit: 2018

Homeport: Split, Croatia

Builder: Princess Yachts

Shower/Toilet: 4 with additional day head

Sleeping capacity: 8 guests

Engine: 2 x MTU 16V 2000 (1790 kW)

Cruising speed: 22 knots

Cabins: Master, VIP and two twin convertible cabins,
all based on the lower deck level

Crew: Captain + 3 (Chef, Deckhand, Stewardess)

Air conditioning

Stabilisers at anchor

Stabilisers underway

WiFi connection on board

TENDER & SEA TOYS

Tender Williams Turbojet 385 • Jet ski Yamaha VXS wave runner • Jet ski Yamaha stand up • 2 x SUP
Water ski • Snorkeling equipment • Donut per 4 pax • Banana per 3 pax • Spitfire Extreme (3 Pax) • Jobel Tribal 11 (2 Pax)



AGAVE ~ PRINCESS V85



We invite you to discover fascinating Croatia with us!

AGAVE ~ PRINCESS V85



Double cabin